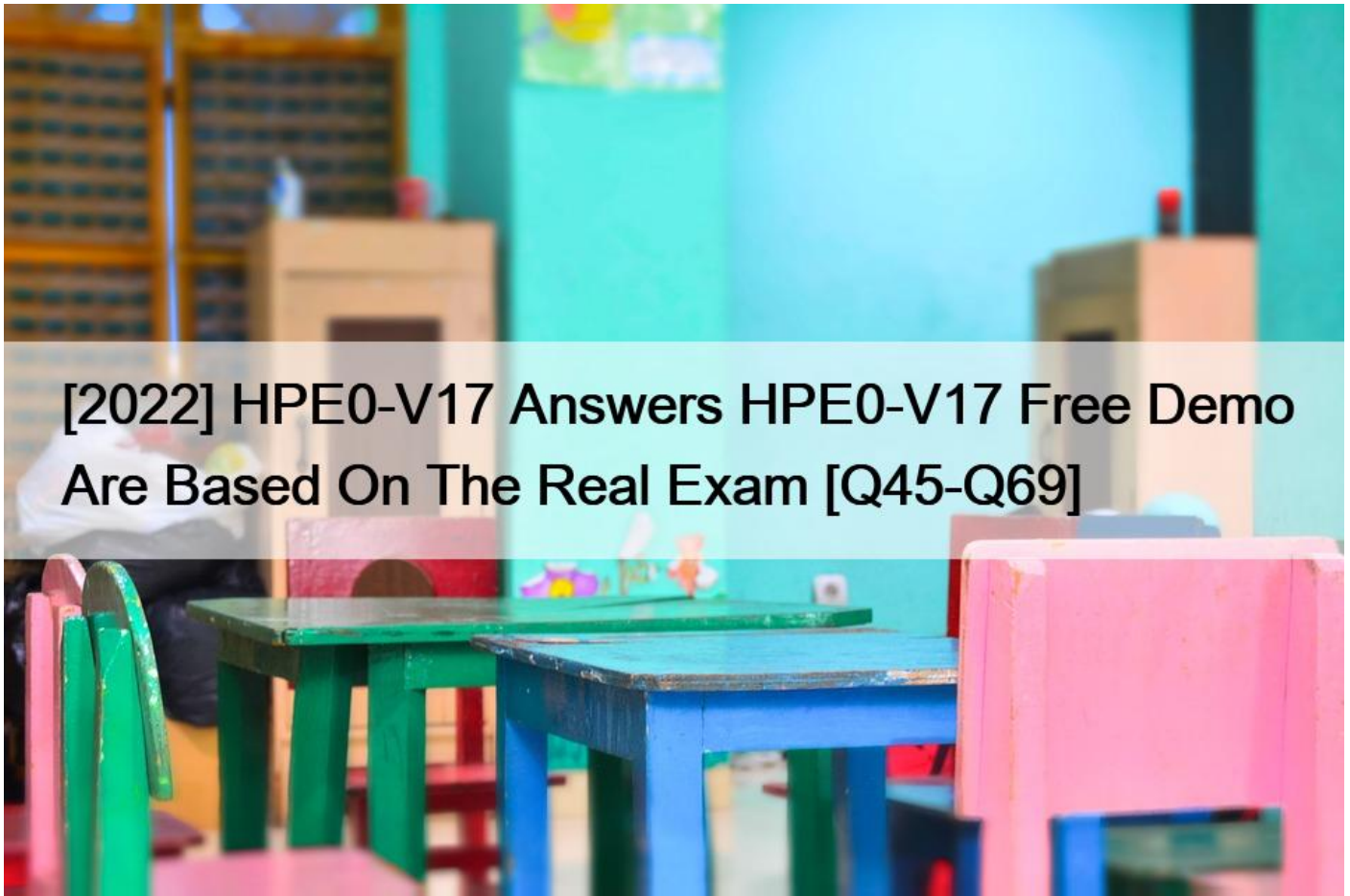


## [2022 HPE0-V17 Answers HPE0-V17 Free Demo Are Based On The Real Exam [Q45-Q69]

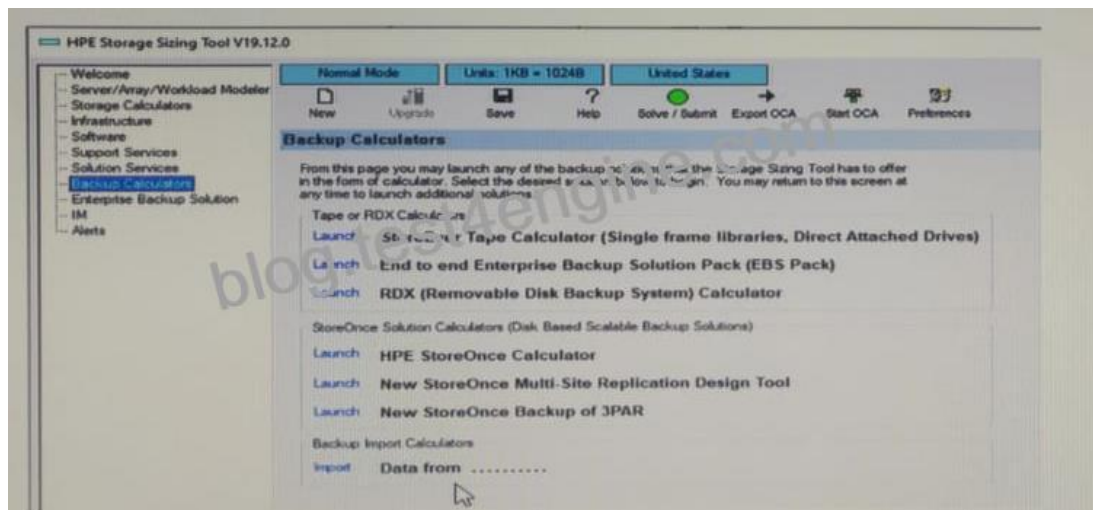


[2022] HPE0-V17 Answers HPE0-V17 Free Demo Are Based On The Real Exam  
HPE0-V17 [Jul-2022 Newly Released] Exam Questions For You To Pass

### HP HPE0-V17 Exam Syllabus Topics:

TopicDetailsTopic 1- Identify the components within a Veeam solution and describe their roles- Explain how Catalyst deduplication worksTopic 2- Differentiate between StoreOnce and the competition- Differentiate between deduplication and compressionTopic 3- Distinguish between VTL and StoreEver, being able to recommend using both or just one- Explain encryption and how keys are managedTopic 4- Select the appropriate backup software that meets the customer needs- Describe the different Veeam licensing optionsTopic 5- Differentiate between zero copy clones, smart clones, and snapshots- Determine the appropriate backup targetTopic 6- Identify the components within a DP solution and describe their roles- Describe the StoreEver portfolio and optionsTopic 7- Display an awareness of key points regarding other relevant ISVs- Explain the use and licensing of HPE Cloud Bank Storage

**Q45.** Refer to the exhibit.



You plan to use the HPE Storage Sizing Tool for an HPE backup environment, as shown in the exhibit. Instead of manually entering all gathered information, you want to use the Import option for fast and efficient sizing of a backup environment.

Is this a tool that generates data that can be imported to the HPE Storage Sizer Tool?

Solution: Is this a tool that generates data that can be imported to the HPE Storage Sizer Tool?

NinjaProtected+

- \* Yes
- \* No

**Q46.** You organize a workshop for your customers IT team to handover a newly deployed backup solution based on HPE StoreOnce backup targets with Veeam as the backup application. Is this an important best practice for this scenario?

Solution: Use HW snapshot integration in the Job advanced properties. It is much faster and has a lighter impact on the production VMs to be backed up.

- \* Yes
- \* No

**Q47.** Is this a correct statement about the HPE StoreEver Tape Library Management software?

Solution: Tape Assure Advanced verifies system health and runs the tests that trigger an alert if there is a problem with a tape drive or cartridge.

- \* Yes
- \* No

**Q48.** A customer contacts you for assistance with performance troubleshooting of their backup environment because over the last few days they notice increasing times for backup completion. They see no apparent reason for this, since the data volume to be backed up did not change unusually compared to the previous days and weeks.

You also notice that the deduplication ratio, historically steady at about 20:1, is now gradually declining. Is this a potential cause of the problem?

Solution: Ransomware is encrypting data, making the daily incremental backups grow and lowering the deduplication ratio due to new content.

- \* Yes
- \* No

**Q49.** Is this a correct statement about the use of Library & Tape Tools (L&TT) in combination with an HPE StoreEver tape library?

Solution: If the customer experiences a problem with a storage product, L&TT can generate a support ticket or report that includes essential information for troubleshooting the problem and sends this automatically to HPE InfoSight.

- \* Yes
- \* No

**Q50.** You meet with a customer who is having performance and stability issues with their tape-based backup environment based on HPE StoreEver systems. Should you use this tool to gather information and troubleshoot the installed systems?

Solution: SAF Analyze

- \* Yes
- \* No

**Q51.** You are working with your customer on the advantages and disadvantages of various data protection schemes. They currently have a storage solution with 2 HPE 3PAR arrays with Peer Persistence. This is used to make backups to an HPE StoreOnce VTU backup target using Commvault. Will this recommendation enhance the data protection plan?

Solution: Follow the 3-2-1-1-0 rule

- \* Yes
- \* No

**Q52.** Is this a correct statement about the integration of Veeam with HPE storage arrays and HPE StoreEver tape libraries?

Solution: The VM data cannot be copied directly to HPE StoreEver tapes; backup to tape is accomplished by replication jobs inside Veeam from existing backup repositories.

- \* Yes
- \* No

**Q53.** Is this a reason why your customer might choose the HPE Apollo 4510 systems instead of the HPE Apollo 4200 system?

Solution: The Apollo 4510 system has a higher density chassis, and so can host more drives with more backup capacity.

- \* Yes
- \* No

**Q54.** Does this option describe a valid scenario for using the 3-2-1 data protection rule or the 3-2-1-1-0 data protection rule?

Solution: You intend to use at least 2 different media types

- \* Yes
- \* No

**Q55.** As it relates to application-consistent backups, does this statement accurately describe the volume Shadow Copy Service (VSS)?

Solution: The use of the VSS mechanism is only possible on Windows-based VMs.

- \* Yes
- \* No

**Q56.** Your customer runs a hyperconverged solution based on HPE SimpliVity. with a built-in data protection mechanism from HPE SimpliVity They try to recover objects from a Microsoft Exchange server but cannot find the option in the user interface Is this valid response regarding their problem?

Solution:Since HPE SimpliVity does not support Granular Object Restore (GRE). you must use an additional data protection application like Veeam

- \* Yes
- \* No

**Q57.** Your customer wants a suggestion for protection against ransomware.

Is this an appropriate suggestion regarding backup targets and their protection against ransomware?

Solution: You suggest tape drives or tape libraries with a tape rotation scheme where tapes are being physically moved to a vault at regular times.

- \* Yes
- \* No

**Q58.** Is this a valid statement regarding Commvault components?

Solution: For larger environments where high availability Is critical, the CommServe server can be clustered

- \* Yes
- \* No

**Q59.** is this a Commvautit feature that enables integration with HPE storage?

Solution:intelliSnap catalogs snapshot data to simplify the recovery of individual files.

- \* Yes
- \* No

**Q60.** Your customer currently uses an HPE Nimble storage array Data protection Is provided by Veeam connected to HPE StoreOnce Gen4 Catalyst stores Your customer asks tor your advice regarding optimized data protection following the 3-2-1 rule with an additional copy outside the datacenter you ten them about the HPE StoreOnce feature called Cloud Bank storage.

Are these correct statements about enabling Cloud Bank storage in this environment?

Solution:Recovery Manager Central (RMC) must be deployed to handle the copy management from HPE Nimble to the HPE StoreOnce Catalyst store and from HPE StoreOnce lo the Cloud Bank store.

An RMC license for the Nimble array and a capacity-based license for Cloud Bank is required.

- \* Yes
- \* No

**Q61.** Is this a reason why your customer might choose the HPE Apollo 4510 systems Instead of the HPE Apollo 4200 system?

Solution:The Apollo 4200 system is deployed with veeam Backup & Replication Standard Edition, while the 4510 system runs the Enterprise Edition for a more extended feature set

- \* Yes
- \* No

**Q62.** A customer contacts you for assistance with performance troubleshooting of their backup environment because over the last few days they notice increasing times for backup completion They see no apparent reason for this, since the data volume to be backed up did not change unusually compared to the previous days and weeks.

You also notice that the deduplication ratio, historically steady at about 20:1. is now gradually declining Is this a potential cause of the problem?

Solution:Ransomware is encrypting data, making the dairy incremental backups grow and lowering the deduplication ratio due to new content.

- \* Yes
- \* No

**Q63.** A customer wants to discuss their current backup environment.

While walking to the meeting room, you pass what the customer tells you is their only computer room You notice they have a mix of Proliant DL servers, three Synergy frames. Nimble, and a MSL3040 in the racks.

Is this a tool you can use to gather information on the current backup data to size a new solution?

Solution: DD Analyzer

- \* Yes
- \* No

**Q64.** You are running a Proof-of-Concept for a customer's new data protection solution based on Veeam and HPE StoreOnce.

You want to demonstrate the source-side deduplication features of the solution, to reduce the volume of data being sent across the network.

is this a parameter that should be set?

Solution:Source Side deduplication; in the Global Deduplication section of the HPE StoreOnce system

- \* Yes
- \* No

**Q65.** During a meeting, you learn that your client has an SLA with another business, but that business asks for lower RTO and RPO times for data recovery.

Is this a correct statement regarding how HPE solutions can help to comply with this tighter SLA?

Solution: Commvaultintellisnap technology and the HPE storage snapshot engine allow you to meet demanding business-critical application SLAs with scalable protection for recovery point and time objectives in minutes.

- \* Yes
- \* No

**Q66.** Your customer wants compliance with 3-2-1 data protection best practices. You tell the customer about the HPE StoreOnce repticatton options to copy backup data to multiple locations is this a valid statement regarding HPE StoreOnce data mobility?

Solution: Replication is only supported when both HPE StoreOnce systems are registered with HPE infoSight

- \* Yes
- \* No

**Q67.** As relates to mitigating ransomware, is this a best practice?

Solution: Avoid using NAS based backup targets since ransomware is primarily looking for files to encrypt. Instead, use independent access through APIs like Catalyst or tape drives with vaulting procedures.

- \* Yes
- \* No

**Q68.** A customer has deployed a hyperconverged environment based on HPE SimpliVity at a number of their sites.

Before migrating workloads to the environment, you ask them about the backup policies in an HPE SimpliVity solution to protect the actual data.

Is this a design consideration that you should mention to your customer?

Solution: The types of applications running in the resource pools

- \* Yes
- \* No

**Q69.** You are organizing a Proof-of-Concept (POC) for your customer for their new data protection solution based on Commvault technology in combination with HPE Nimble storage and HPE StoreOnce backup targets.

The customer asks you to demonstrate the configuration options for deduplication within the Commvault solution. Is this a location where you can modify the deduplication parameters?

Solution: Access the Advanced Client Properties screen under Client Computers

- \* Yes
- \* No

**New 2022 Realistic Free HP HPE0-V17 Exam Dump Questions and Answer:**

[https://www.test4engine.com/HPE0-V17\\_exam-latest-braindumps.html](https://www.test4engine.com/HPE0-V17_exam-latest-braindumps.html)