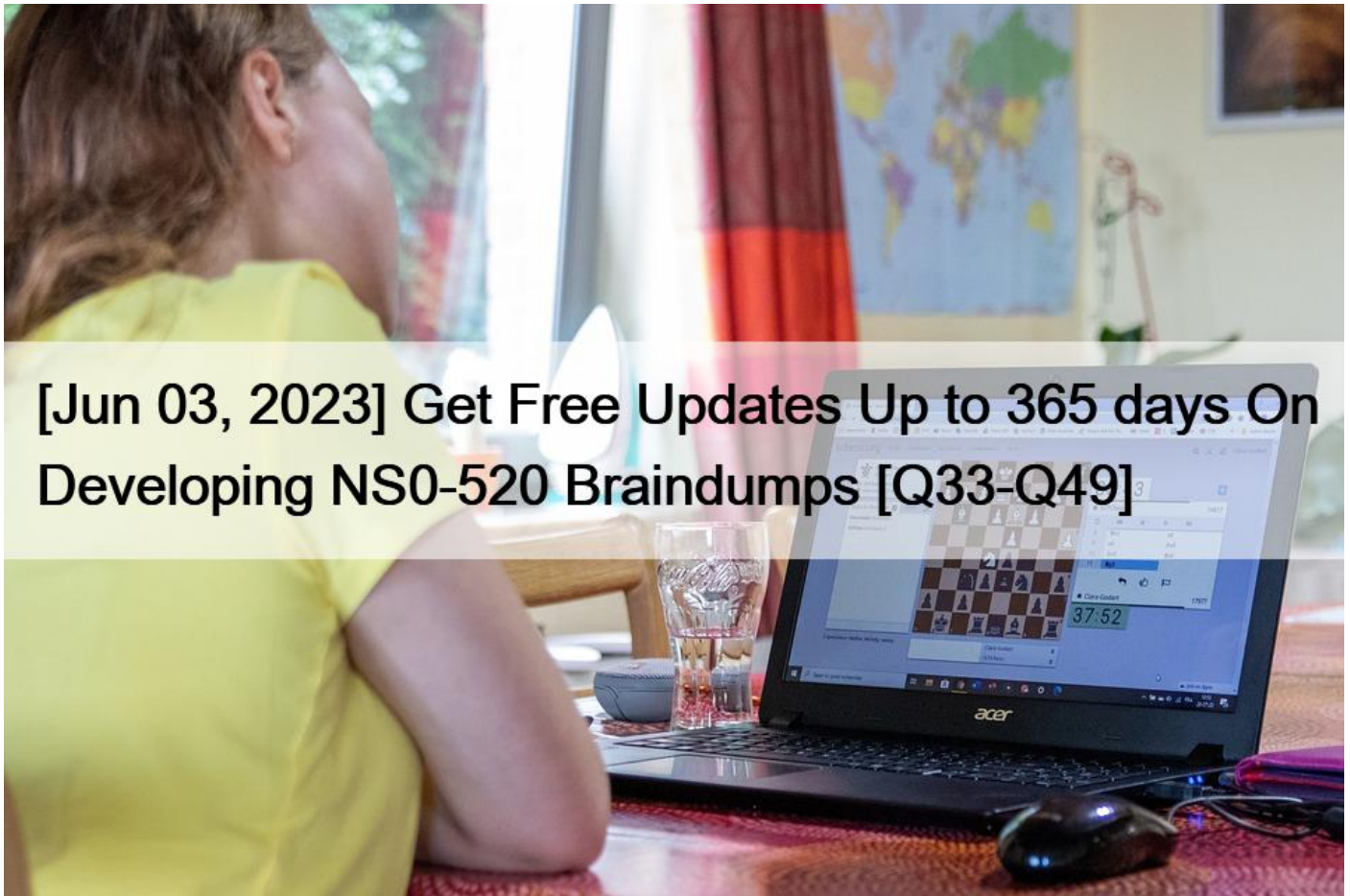


[Jun 03, 2023 Get Free Updates Up to 365 days On Developing NS0-520 Braindumps [Q33-Q49]



[Jun 03, 2023] Get Free Updates Up to 365 days On Developing NS0-520 Braindumps
Best Quality Network Appliance NS0-520 Exam Questions

Candidates who pass the NS0-520 exam will earn the NetApp Certified Implementation Engineer - SAN, ONTAP certification. This certification demonstrates to employers and clients that the candidate has the necessary skills and knowledge to design, implement, and manage complex SAN solutions using NetApp ONTAP software.

NEW QUESTION 33

While expanding a 200 GB LUN in an ONTAP 9.4 system, the following error is observed:

```
cluster1::*> lun resize -path /vol/lun_vol/lun -size +3T  
Error: command failed: New size exceeds this LUN's initial geometry
```

What is the cause of this error?

- * The volume auto-grow is disabled.
- * The LUN reached maximum capacity.
- * The LUN can be expanded up to 10 times its original size.
- * Space reservation is enabled.

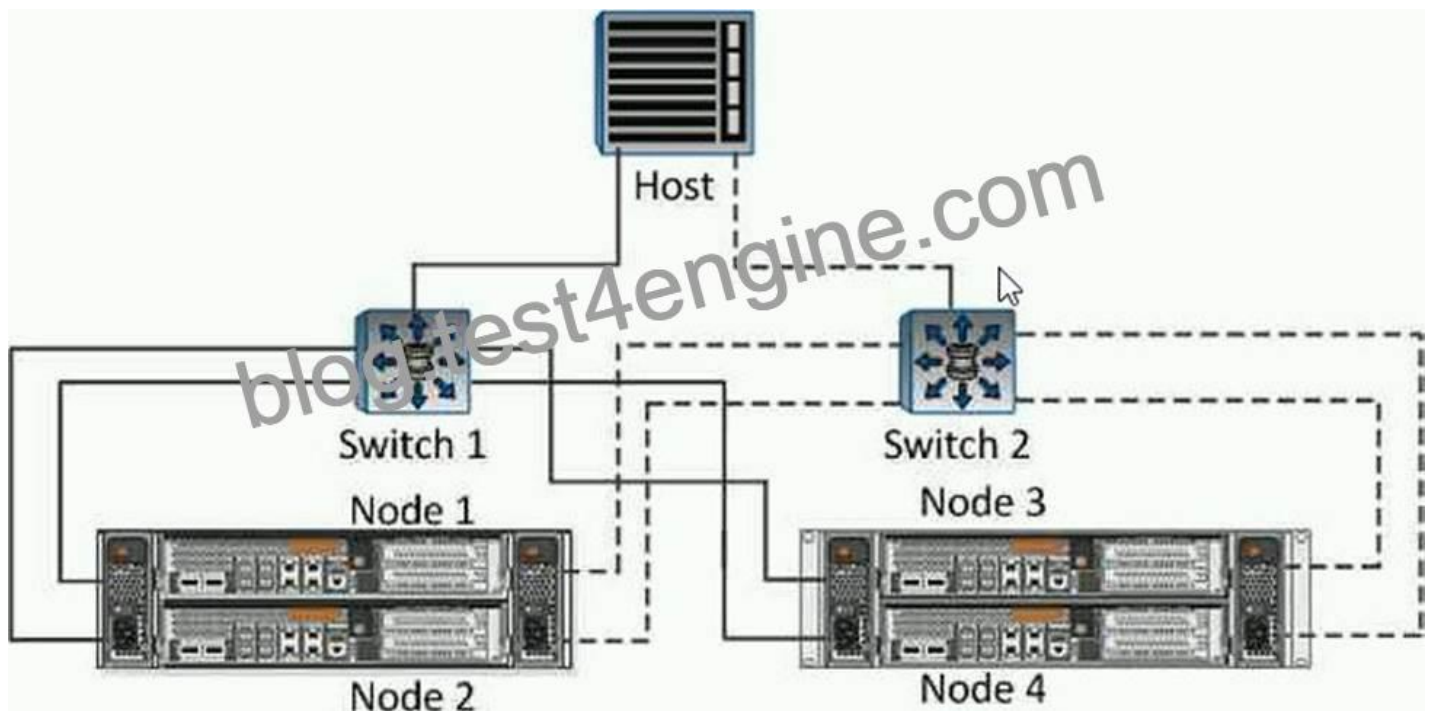
NEW QUESTION 34

What is the supported NVMe OS multipathing stack for VMware ESXi?

- * dm-multipath
- * MPIO
- * NMP
- * PVlinks

NEW QUESTION 35

Click the Exhibit button.



Referring to the dual-fabric cabling diagram shown in the exhibit, which scenario explains why the customer's iSCSI host experienced a SAN outage with a LUN on Node 2?

- * iSCSI LIFs were configured on Node 1 and Node 2 only, the SLM reporting nodes list included Node 1 and Node 2, and Switch 1 went down.
- * iSCSI LIFs were configured on Node 2 only, the SLM reporting nodes list included Node 1 and Node 2, and the cable connecting the host to Switch 1 went bad.
- * iSCSI LIFs were configured on all nodes, the SLM reporting nodes list included Node 1 and Node 2, and Node 1 went down.
- * iSCSI LIFs were configured on all nodes, the SLM reporting nodes list included all nodes, and Node 1 and Node 2 went down.

NEW QUESTION 36

An administrator wants to implement FCoE for connectivity of an AFF A200 using VLAN 3011 for fabric traffic across VSAN 11. When configuring the Nexus switches for FCoE connectivity, which two actions are required? (Choose two.)

- * Create a new virtual FC interface and bind the physical interface to it.
- * Add the virtual interface to the VSAN.
- * Create a port channel and add all of the physical network ports that will have FCoE LIFs.
- * Add the adapter MAC address to the network port configuration where the node is connected.

NEW QUESTION 37

You are adding a new AFF A220 FIA pair to an existing FlexPod infrastructure that is using a pair of Nexus 9332PX switches. Due to rack space constraints, the AFF A220 is to be installed in an adjoining rack, and the distance from the back of the AFF A220 to the Nexus 9332PX switches is nine meters.

In this scenario, which 10Gbe cabling solution would you use to connect the AFF A220 to the Nexus 9332PX switches?

- * mini SAS
- * active Twinax
- * LC/LC OM4 optical
- * passive Twinax

NEW QUESTION 38

Which two storage efficiencies have been enabled on the NVMe namespace that is shown in the exhibit? (Choose two.)

- * deduplication
- * compaction
- * compression
- * thin provisioning

NEW QUESTION 39

An administrator is planning to rehost a SAN volume from one SVM to another SVM on a FAS8300 with all hard disk drives.

After rehosting the volume, what are two policies that must be reconfigured? (Choose two.)

- * export policy
- * caching policy
- * volume efficiency policy
- * snapshot policy

NEW QUESTION 40

You are troubleshooting high CPU use on a FAS8200 with all SAS HDDs. You have SAN hosts with LUNs in a volume named vol1. You want to reduce CPU use and maintain storage efficiencies.

Referring to the exhibit which three actions will accomplish this task? (Choose three.)

- * Disable compression.
- * Enable cross-volume deduplication.
- * Disable inline deduplication.
- * Enable post process deduplication.
- * Enable data compaction.

NEW QUESTION 41

Referring to the exhibit, what is the problem with switch port 0?

- * The transmit and receive links were switched.
- * The SFP+ is faulty.
- * The receive power is lower.
- * The link is not connected.

NEW QUESTION 42

Exhibit.

```
cl1::> lun mapping show
vsrver  path  igroup lun-id reporting-nodes
-----
svm1    /vol/host1/lun0  linux1 0  cl1-01, cl1-02
svm1    /vol/host2/lun0  linux2 0  cl1-01, cl1-02

cl1::> lun show
Vsrvr  Path  State  Mapped  Type  Size
-----
svm1   /vol/host1/lun0  online mapped  linux  10GB
svm1   /vol/host2/lun0  online mapped  linux   20MB
```

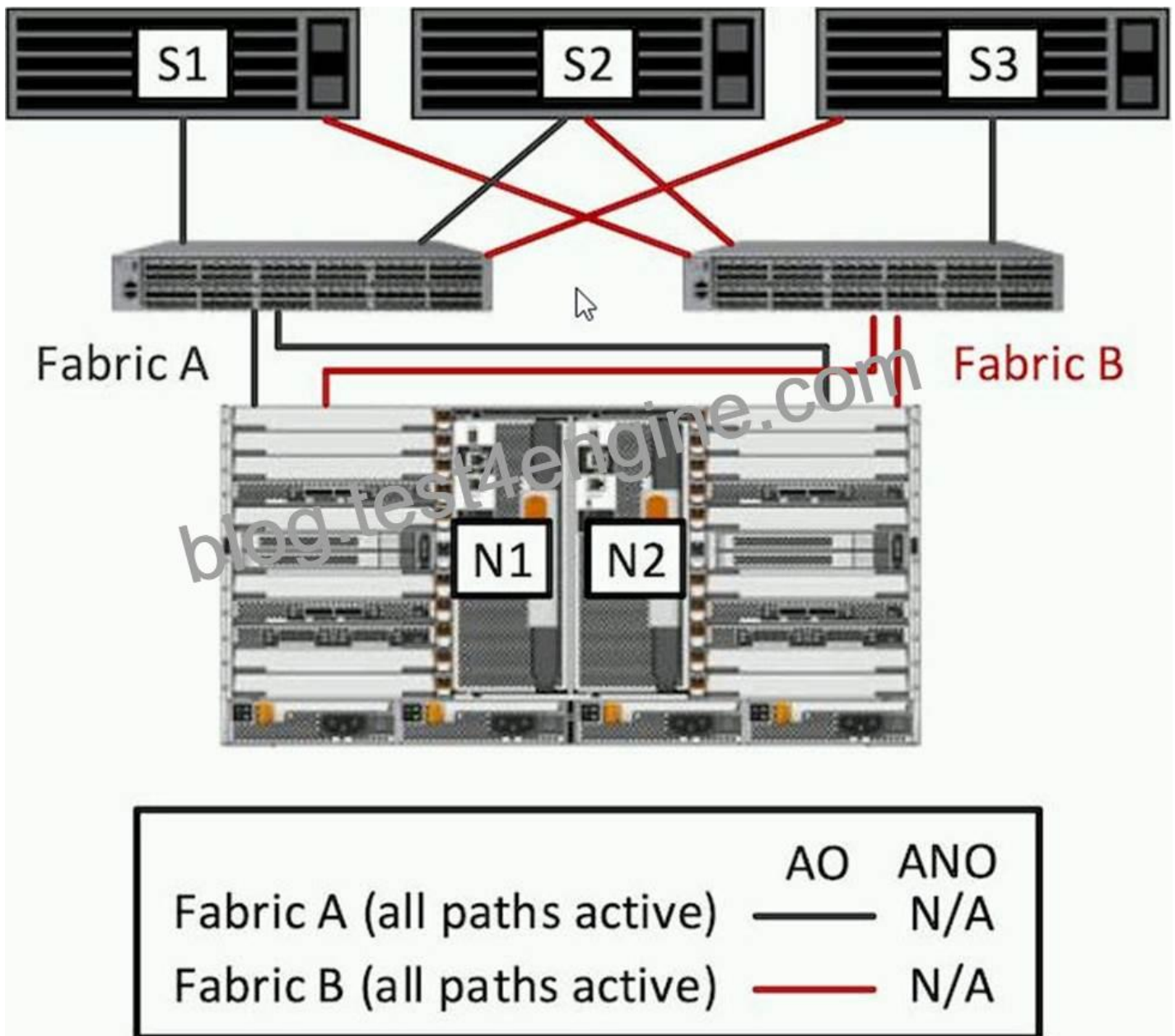
During a data mobility test on a 4-node ONTAP 9.3 cluster, the host loses direct access to its LUNs. The LUNs are hosting on node cl1-01 and are being moved to cl1-03 on a different HA pair.

Referring to the exhibit, which corrective step is needed to ensure access while the volume is moved?

- * Add reporting nodes for cl1-03 and cl1-04.
- * Create additional LIFs on cl1-01 and cl1-02.
- * Create a new destination volume on cl1-03.
- * Create new igroups on cl1-03 and cl1-04.

NEW QUESTION 43

Click the Exhibit button.



You have three Linux hosts that are FC multipath connected to an AFF All SAN Array A700. A failover test is performed by shutting down both Fabric A and N2, as shown in the exhibit.

Referring to this exhibit, what happens to the remaining paths from the Linux hosts to the ASA A700 target?

- * All paths are active-non-optimized (ANO).
- * All paths go offline from the double failure of the switch and node.
- * All paths are active-optimized (AO).
- * Half of the paths are active-non-optimized (ANO) and the other half are active-optimized (AO).

NEW QUESTION 44

You have a 100GB volume with the space guarantee set to volume, This volume contains two space reserved 20 GB LUNs. Both LUNs are at 50% use. You then create a snapshot copy of the volume. No modifications were performed since the snapshot copy

was completed, and all actions were performed using the CLI. In this scenario, how much free space does the volume have?

- * 60 GB
- * 20 GB
- * 40 GB
- * 80 GB

Both LUN created are inheriting the space reserved parameter from its volume parent, so both LUNs are thick provisioned using 20 GB each one of them and the snapshots have not increased because there has not been any changes since their creation

100GB – 20 GB – 20GB

NEW QUESTION 45

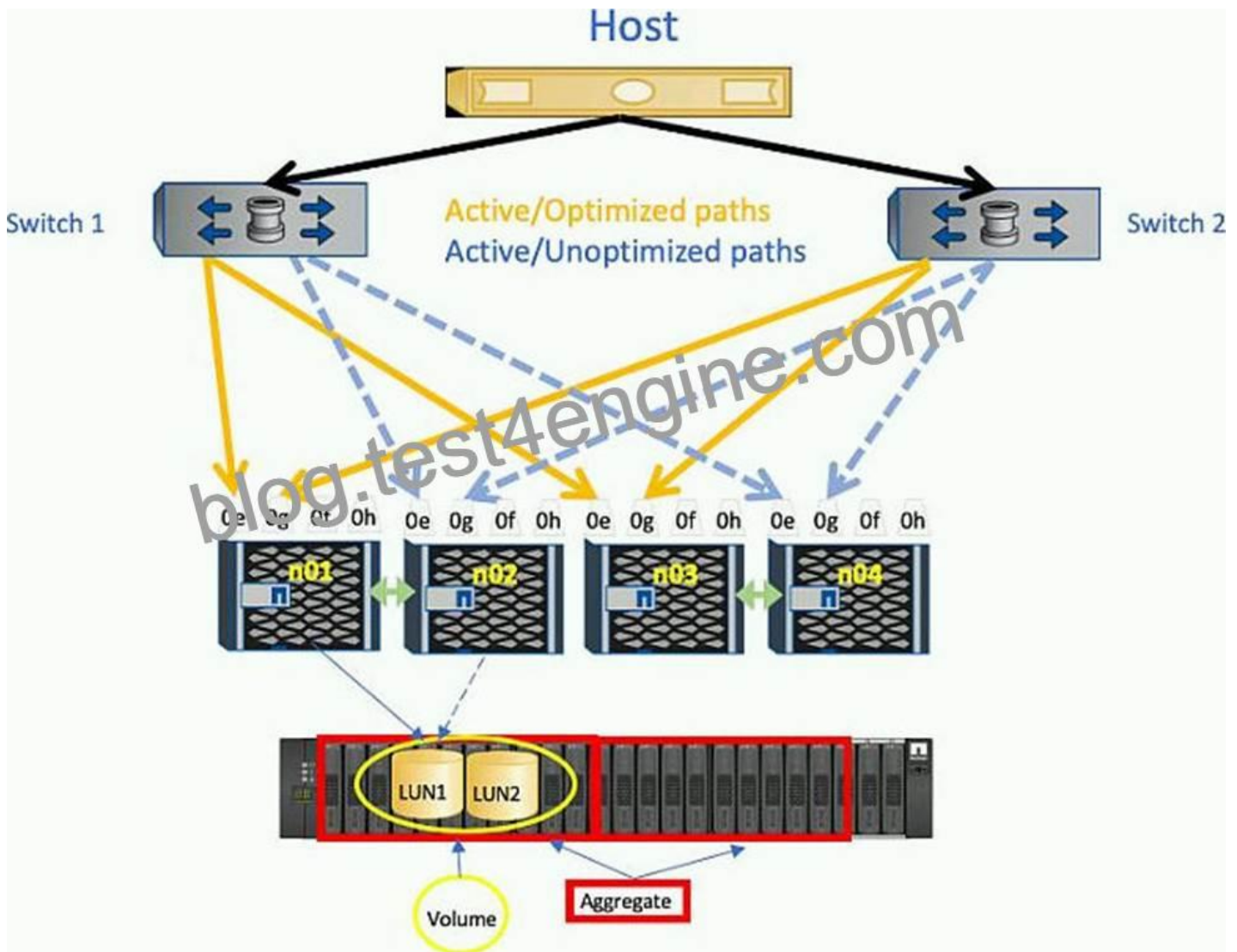
You have an existing 8-node Netapp Cluster serving NFS data, and you want to expand your cluster by an additional four nodes to serve ISCSI. In this scenario, where would you validate this configuration?

- * Active IQ Upgrade Advisor
- * Interoperability Matrix Tool
- * SAN Administration Guide
- * Hardware Universe

Hardware Universe shows how many nodes and which filers are compatible to mix between them

NEW QUESTION 46

Click the Exhibit button.



Referring to the exhibit, you need to reduce the number of paths from the host to the LUNs.

Which three would reduce the number of paths? (Choose three.)

- * Selective LUN Map (SLM)
- * Asymmetric Namespace Access (ANA)
- * switch zoning
- * port sets
- * ALUA

NEW QUESTION 47

An administrator needs to connect a new VMware 6.5 cluster to an ONTAP cluster for iSCSI connectivity. Which two steps would accomplish this task? (Choose two.)

- * Enable iSCSI adapters on the ESXi hosts.
- * Install the Virtual Storage Console for VMware vSphere.
- * Configure zoning for the HBAs and the ONTAP data LIFs.
- * Configure ALUA on the ONTAP SVM.

NEW QUESTION 48

An administrator is migrating from a third-party's SAN to a newly purchased FAS9000. The administrator decides to use the NetApp Foreign LUN Import (FLI) process.

What must the administrator do for this process to work properly?

- * Create multiple igroups for the Initiator ports.
- * Create six distinct zones that include specific ports within each zone.
- * Zone target ports of source storage with initiator ports of destination storage.
- * Make the destination LUN larger than the foreign LUN.

NEW QUESTION 49

Which data collection tool would be used for obtaining detailed information about hosts that are attached to ONTAP storage?

- * Upgrade Advisor
- * OneCollect
- * Brocade Network Advisor
- * Conflg Advisor

Network Appliance Exam Practice Test To Gain Brilliance Result:

https://www.test4engine.com/NS0-520_exam-latest-braindumps.html